

# APPICS Event Tutorials

## Topics:

How to add Polygon to your Metamask

How to enter the event

How to create avatar with ReadyPlayerMe

How to control your avatar and use emotes

How to claim your visor

How to get a jetpack / hoverboard

## 1 - How to setup Metamask and add polygon to it

To enter the gamestate Metaverse, you will need a MetaMask wallet - don't worry, this will only take 5 minutes or less.

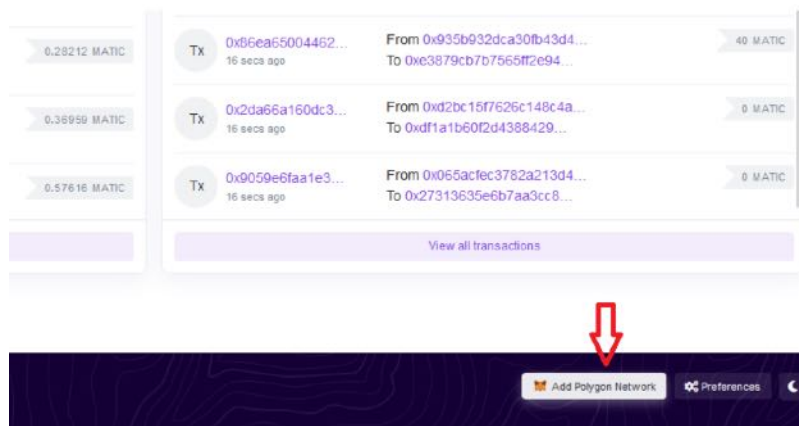
(If you already have MetaMask installed and just want to add Polygon to it, jump to the next section.)

### How to install & set up a new metamask wallet

- 1.) First, visit <https://metamask.io/> and click on the blue download button to install the extension for your browser. Once the download is completed, a fox icon will appear in your browser window.
- 2.) Click on it and it will ask whether you want to import a wallet or create a new one for free. Assuming you're new to Metamask, click on the button to create a new wallet and then set a password. You can choose this password yourself and will need to enter it everytime you open the extension.
- 3.) Once it is set, you will then receive a seed phrase - a set of 12 random words that acts as your private key.
- 4.) This is the most important step of any wallet creation: Make sure to save and back-up this seed phrase! This is your access to any digital assets you're going to store in your new Metamask wallet - so make sure to save it in a secure location like a password manager, AND also back it up in a different way, for example printing it out and physically storing it in a safe.
- 5.) Your Metmask wallet is now setup and ready to use!

## How to add Polygon to your metamask wallet (simple & quick)

- 1.) Since the Gamestate Metaverse is based on the Polygon Blockchain, we'll
- 2.) Now you need to add Polygon to our Metamask. First, make sure that you are signed in to your metamask extension in your current browser window.
- 3.) Visit <https://polygonscan.com/> (a blockchain explorer for Polygon)
- 4.) Scroll all the way to the bottom of the page.
- 5.) On the right hand side, click on the button "add polygon network"



- 6.) Metamask will now open a new window, asking you to confirm the connection request. Check if everything is correct, click on "approve" and that's it - you have now successfully added polygon to your metamask wallet.

## How to manually add Polygon to your metamask wallet

Just in case the installation via polygonscan didn't work or you prefer to do the setup manually, this is how you can add polygon to your metamask yourself:

- 1.) Open your metamask wallet extension and sign in if you aren't already.
- 2.) Look for the button that says "Ethereum Mainnet" at the top and click on it, which will open a drop-down menu.
- 3.) From the drop-down menu, click on "add network" and enter the following details:  
Network Name - Polygon Mainnet  
New RPC URL - <https://polygon-rpc.com/>  
Chain ID - 137  
Currency Symbol - MATIC

Blockchain Explorer URL (optional) - <https://polygonscan.com/>

- 4.) Click on “save” and that’s it - you have now added the polygon network manually to your metamask wallet.

## 2 - How to enter the APPICS Metaverse Events

Once you’ve done this, you’re ready to attend your first event in the APPICS Metaverse!

Now here’s how you can enter:

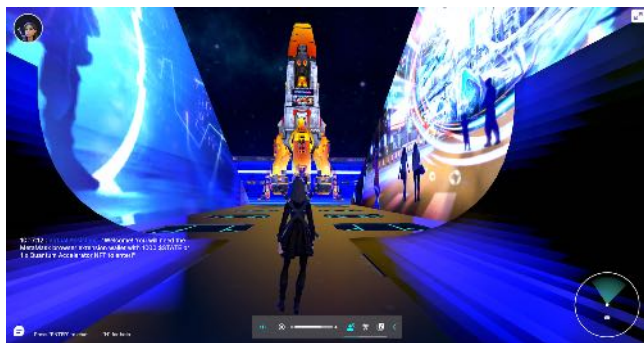
- 1.) Visit the website <https://megaverse.gamestate.one/>
- 2.) Select your Avatar. You can either click on the “default” button to quickly enter the Metaverse by selecting one of the default Avatars. Or you can click on “custom”, which will prompt you to sign in to your Ready Player Me account. From there, you will be able to either select or customize one of your existing ready player me avatars, or create a new one. Once your Avatar has finished loading in the readyplayerme window, you can make changes to it or directly click on “next” in the top right corner to exit the Avatar selection.
- 3.) You’ve successfully entered the APPICS Metaverse! Take a second to get familiar with the controls used to move the camera and navigate with your avatar.
- 4.)



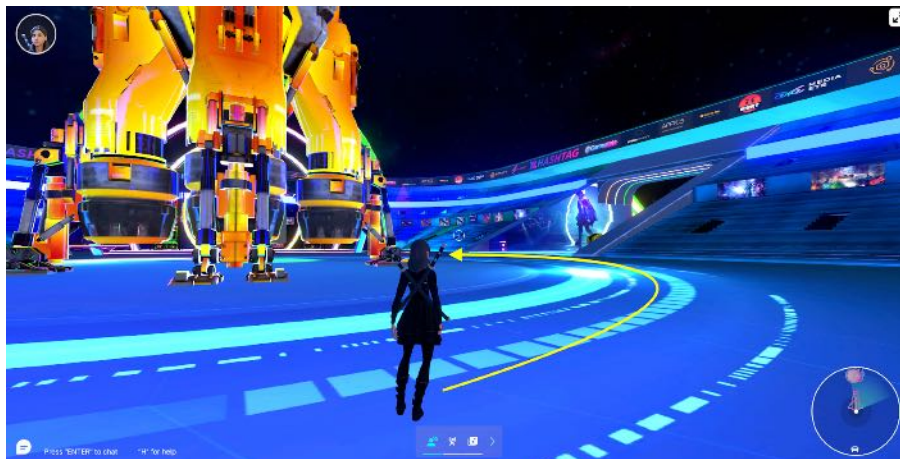
5.) Now make your way to the ticket booth straight ahead.



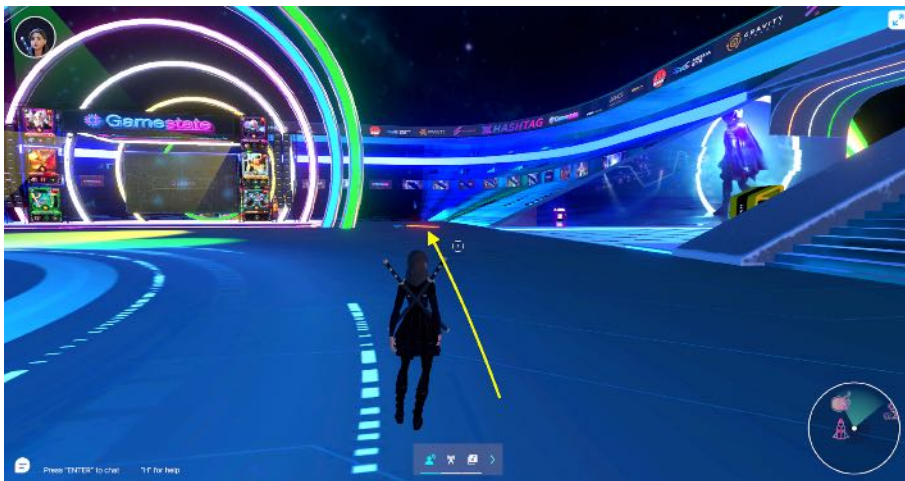
6.) When you entered through the main portal, go straight towards the giant rocket.



7.) Make your way around the rocket



8.) Go straight ahead to where you can see some neon arrows on the floor



9.) When you arrive, you will see that these arrows point towards the entrance to the APPICS Metaverse! Follow them to get to the entry.

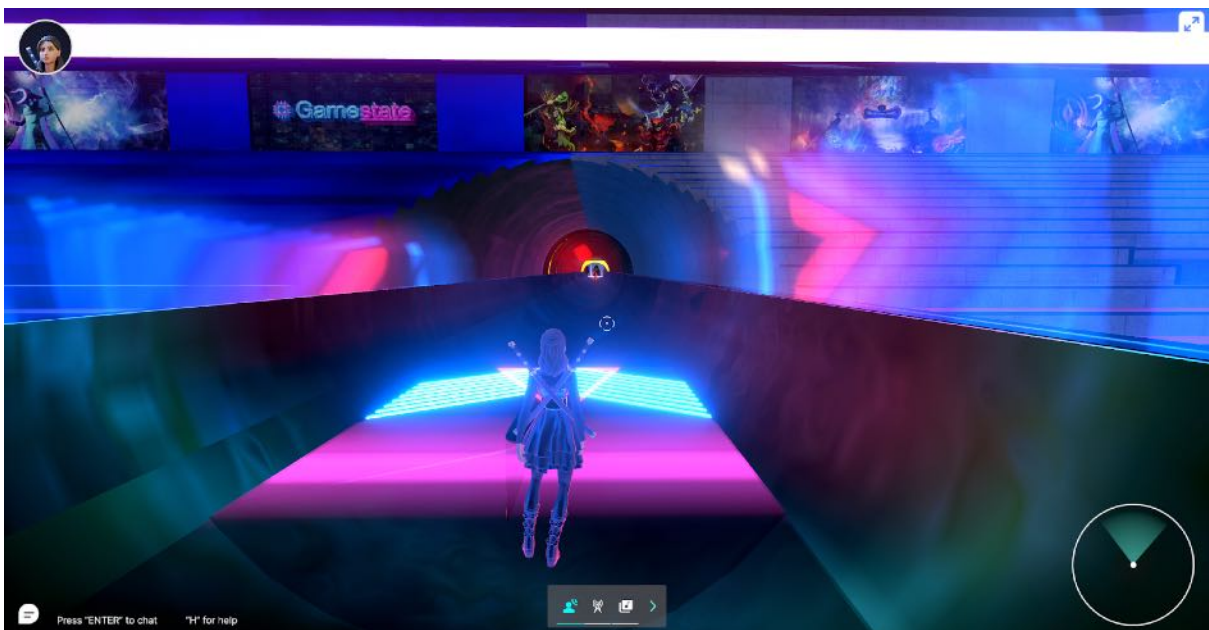


10.) You will be greeted by your name . Go up the steps, walk towards the portal, and click on “enter” to confirm!



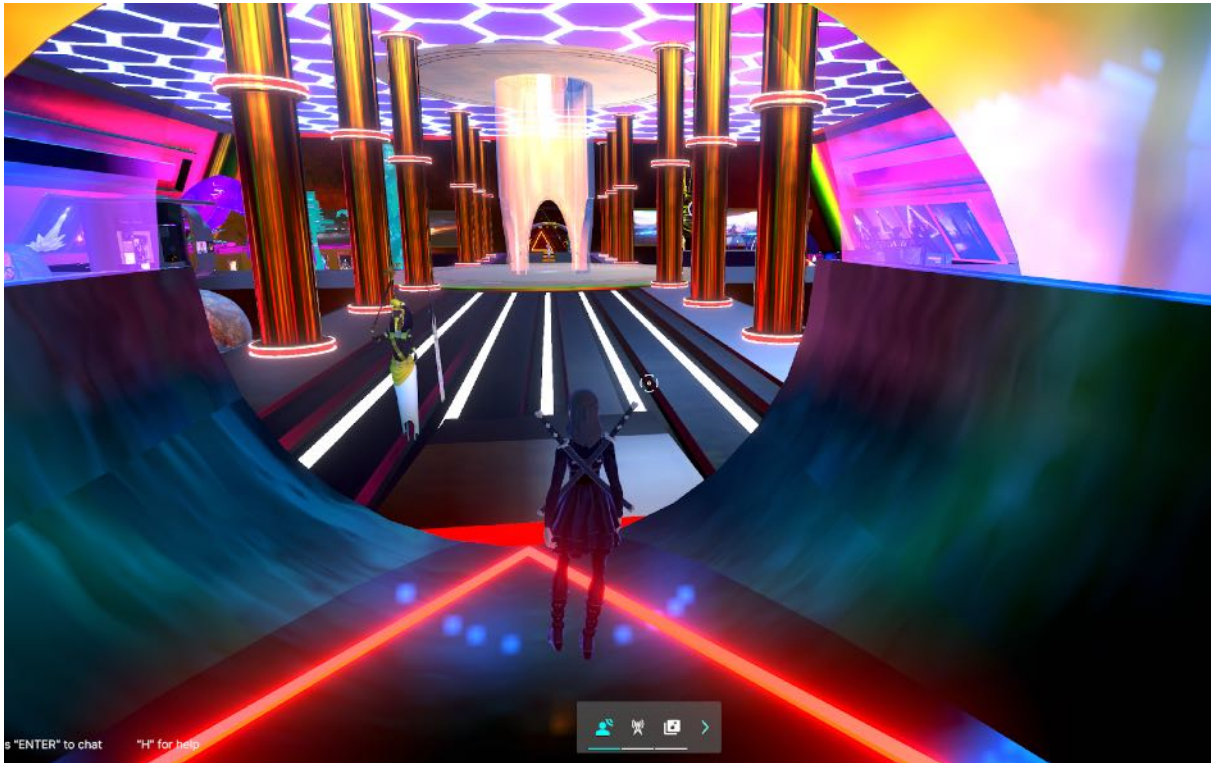


- 11.) Now you find yourself in a tunnel. Walk until the very end of the tunnel (you can hold down shift to run faster or use your hoverboard if you have one!). When you reach the end of the tunnel, you will arrive at the entrance of the event location!



- 12.) Once you entered the pyramid, there are many things to discover - take a look around and explore the APPICS origin area, NFT gallery, fashion stage,

Jetpack and Hoverboard station, gaming area,



12.) then take the space-elevator up to the 2nd floor where you will find several photo booths that offer an opportunity to take screenshots of your avatar in front of a beautiful background, as well as the dancefloor and DJ stage where we are hosting exciting live events! Enjoy your time in the APPICS pyramid and see you in the Metaverse!



### 3 - How to create your avatar with ReadyPlayerMe

To enter the Metaverse, you first need to create an Avatar. Your avatar is your virtual self, and you can either make it look like your real self or totally different - it's up to you!

This is how you can create & customize your Metaverse Avatar in 5 minutes or less:

- 1.) Visit <https://readyplayer.me/>
- 2.) Click on "Enter hub" and then sign up for a new account.
- 3.) Choose your body type and upload a selfie if you want - this will automatically generate a face that looks similar to yours.
- 4.) Change any facial features, hairstyles, accessories, outfits and more to your liking.
- 5.) Once you are happy with how your Avatar looks, click on the button "enter hub" - and that's it!

Now you can enter the APPICS Metaverse with your ReadyPlayerMe account and explore our virtual world!

You can also create different avatars in one ReadyPlayerMe account if you ever want to change up your virtual appearance.

ReadyPlayerMe even works across several Metaverse platforms, so you will be able to use your new virtual self not only on APPICS, but also on [Spatial](#), [Hiberworld](#), [MeetinVR](#), [Mona](#), [theportal](#) and more.

([Click here](#) for a full list of platforms that connect with ReadyPlayerMe)





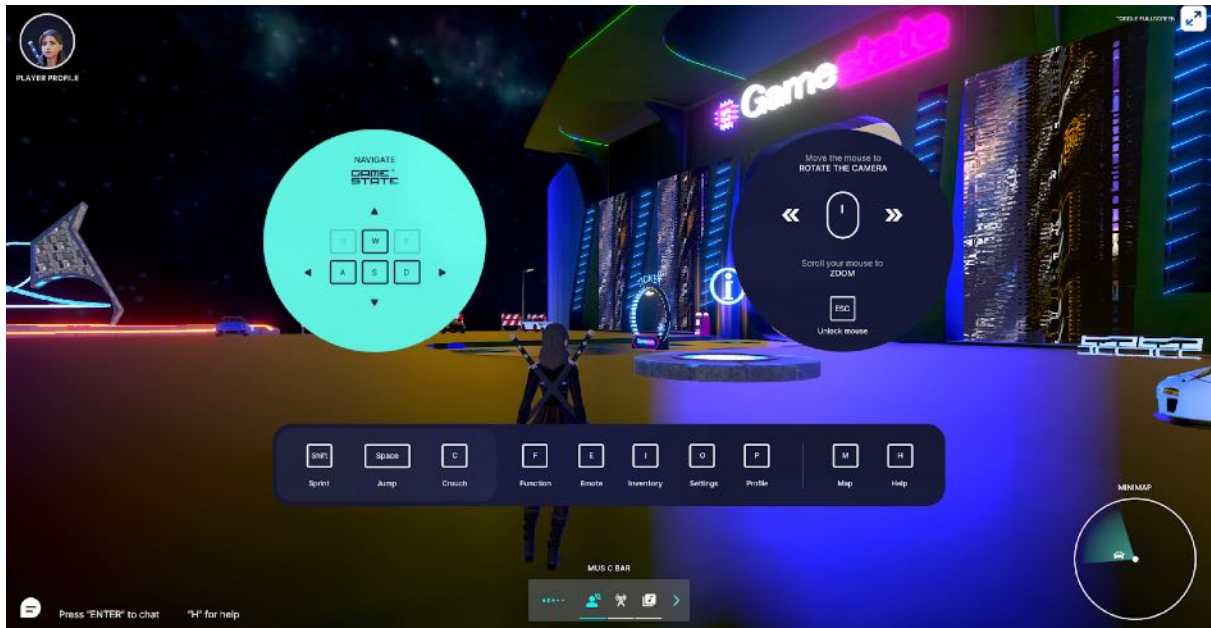
## 4 - How to control your avatar and use emotes

In this article, we will cover how you can control your avatar to move around the APPICS Metaverse and use cool emotes to make your avatar do certain poses and interact with others.

First, you will need to enter the APPICS Metaverse at <https://megaverse.gamestate.one/>

Once you're inside the Metaverse, you can move around with the keys WASD. You can also use the space bar to jump, hold shift to run faster, or press C to crouch.

You can rotate the camera with your mouse, scroll to zoom, and press ESC to unlock the mouse (if you want to exit the Metaverse or switch to another browser window or application)



## Shortcuts:

### H - Help

If you're ever confused about which shortcut to use or are looking for a specific setting, press "H" to pull up the help menu as you can see in the picture above.

### E - Emotes

Press "E" to open the Emotes window. Emotes are essentially a pose or a move that your avatar can perform to express an emotion. You can either select one of the emotes from the options by clicking on it, or you can press E followed by the number of the emote - for example E and then 1 .

You can also customize emotes by adding more ...

### I - Inventory

When you press "I" you open up your inventory, which can contain items like your Visor and Jetpack.

If you want to equip one of these items, go to the “Equip” tab and then double-click on the item to equip/unequip.

### **O - Settings**

You can bring up your personal settings by pressing “O”. Here you can change the visibility & transparency of your name (which is shown above your head for other players), change the mouse sensitivity, graphics and audio settings.

### **P - Profile**

Pressing “P” takes you to your profile where you can quickly change your appearance by switching between Avatars.

### **M - Map**

Pressing “M” will open up a map of the area you’re currently in.

Have fun interacting with other users through emotes and exploring the APPICS Metaverse & discovering all it has to offer!